

**ATTRACTIONS**

- Great Sand Dunes National Park & Preserve Mosca 719-378-6300  
[www.nps.gov/grsa](http://www.nps.gov/grsa)
- Cumbres & Toltec Scenic Railroad Antonito 888-286-2737  
[www.combrestoltec.com](http://www.combrestoltec.com)
- Rio Grande Scenic Railroad Alamosa 877-726-7245  
[www.riograndescenicrailroad.com](http://www.riograndescenicrailroad.com)
- Creede Repertory Theatre Creede 719-658-2540  
[www.creederep.org](http://www.creederep.org)
- San Luis Lakes State Park & Wildlife Area Mosca 719-378-2020  
[www.parks.state.co.us/Park/SanLuis](http://www.parks.state.co.us/Park/SanLuis)
- Shrine of the Stations of the Cross San Luis 719-672-3685
- Zapata Ranch Bison Tours Mosca 888-592-7282  
[www.zranch.org](http://www.zranch.org)
- Colorado Gators Mosca 719-378-2612  
[www.gatorfarm.com](http://www.gatorfarm.com)
- UFO Watchtower Hooper 719-378-2296
- Pike's Stockade Sanford 719-379-3512
- Del Monte Gun Club Monte Vista 719-852-2959
- Our Lady of Gaudalupe Church Conejos 719-376-5985
- Old Spanish Trail Del Norte 719-376-5985  
[www.oldspanishtrail.com](http://www.oldspanishtrail.com)

**GOLF**

- Rio Grande Country Club South Fork 719-873-1997  
[www.riograndeclub.com](http://www.riograndeclub.com)
- Cattails Golf Course Alamosa 719-589-9515  
[www.almosacattails.com](http://www.almosacattails.com)
- Challenger Golf Club Crestone 719-256-4856  
[www.challengergolfclub.com](http://www.challengergolfclub.com)
- Monte Vista Country Club Monte Vista 719-852-4906  
[www.montevistagolfclub.com](http://www.montevistagolfclub.com)

**HOT SPRINGS**

- Joyful Journey Hot Springs Villa Grove 719-256-4328  
[www.joyfuljourneyhotsprings.com](http://www.joyfuljourneyhotsprings.com)
- Sand Dunes Swimming Pool Hooper 719-378-2807  
[www.sanddunespool.com](http://www.sanddunespool.com)
- Valley View Hot Springs Villa Grove (clothing optional) 719-256-4315  
[www.olt.org](http://www.olt.org)

**MUSEUMS**

- The Conejos Museum Antonito 800-835-1098
- Creede Historical Museum 17 S. Main, Creede 719-658-2004
- Creede Underground Mining Museum 407 N. Loma, Creede 719-658-0811
- Fort Garland Museum 29477 Highway 159, Fort Garland 719-379-3512
- Hazard House Museum 807 Pitkin, Saguache 719-655-2557
- Jack Dempsey Museum 412 Main St, Manassa 719-843-5207
- Luther E. Bean Museum Richardson Hall - Adams State College 719-587-7151
- Monte Vista Historical Society Museum 110 Jefferson St, Monte Vista 719-852-4396
- Rio Grande County Museum & Cultural Center 580 Oak St, Del Norte 800-233-4403
- Saguache County Museum 405 8th St, Saguache 719-655-2557
- San Luis Museum & Cultural Center 401 Church Pl, San Luis 719-672-3611
- Transportation of the West Museum 916 1st Ave, Monte Vista 719-852-2518
- Homelake Veterans Center Museum 3749 Sherman Ave, Monte Vista 888-838-2687
- San Luis Valley Museum 401 Hunt, Alamosa 719-587-0667

**COMMUNITY SERVICES**

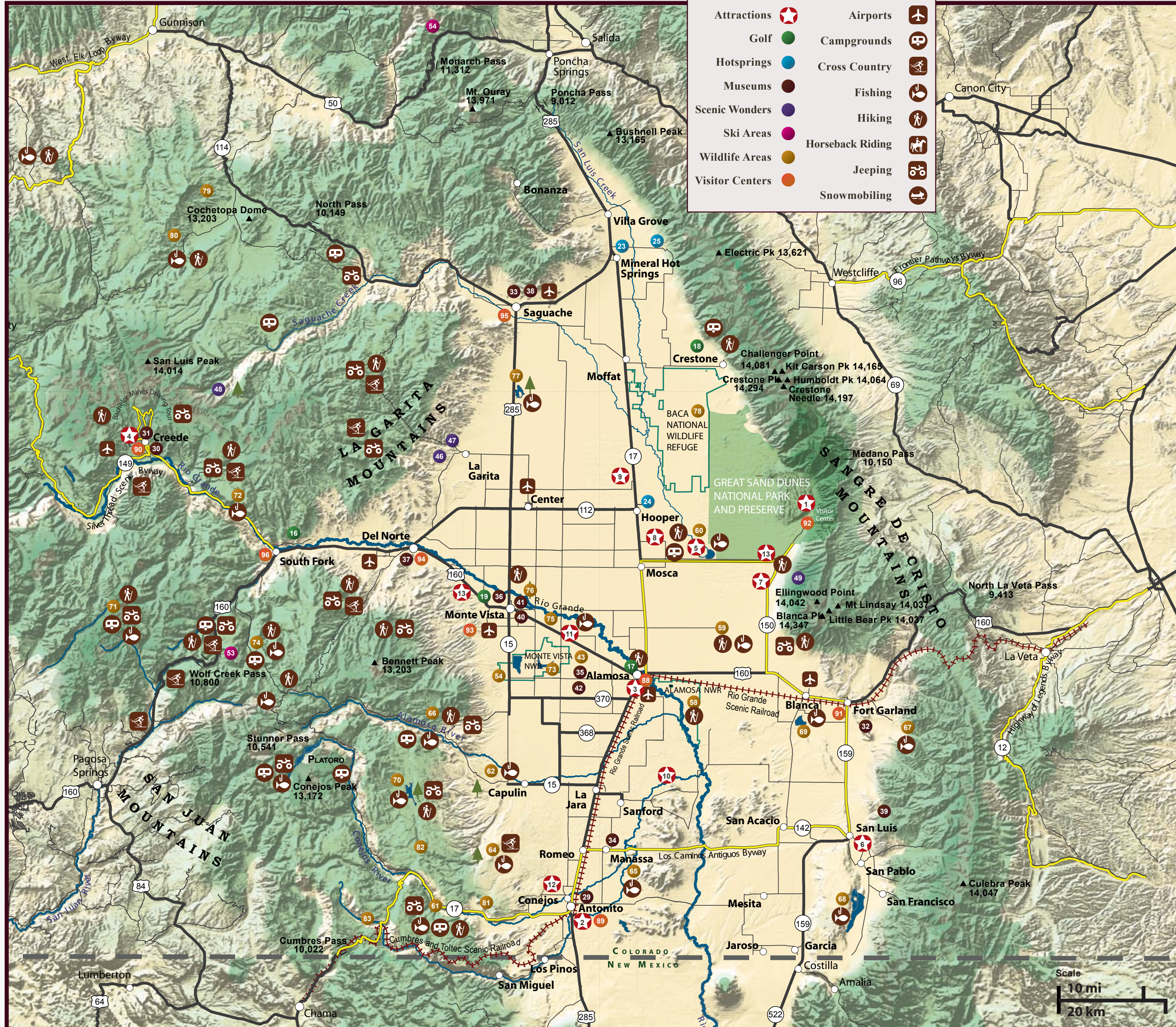
**TOWN LISTING ICONS**

Dining	Library
Fuel	Lodging
Hospitals	Parks
Information Center	Shopping

- |              |             |               |
|--------------|-------------|---------------|
| Alamosa      | Hooper      | Mosca         |
| Antonito     | La Garita   | Saguache      |
| Blanca       | La Jara     | San Francisco |
| Center       | Manassa     | San Luis      |
| Creede       | Moffat      | San Pablo     |
| Crestone     | Monte Vista | South Fork    |
| Del Norte    |             | Villa Grove   |
| Fort Garland |             |               |

**MAP LEGEND**

- |                 |                  |
|-----------------|------------------|
| Attractions     | Airports         |
| Golf            | Campgrounds      |
| Hotsprings      | Cross Country    |
| Museums         | Fishing          |
| Scenic Wonders  | Hiking           |
| Ski Areas       | Horseback Riding |
| Wildlife Areas  | Jeeping          |
| Visitor Centers | Snowmobiling     |



**SCENIC WONDERS**

- Great Sand Dunes National Park & Preserve 46
- La Garita - Natural Arch 47
- Penitente Canyon 48
- San Luis Lakes State Park & Wildlife Area 49
- Wheeler Geologic Area 50
- Zapata Falls 51

**SKI AREAS**

- Wolfcreek 970-264-5639 52
- Monarch 888-996-7669 53

**WILDLIFE AREAS**

- Alamosa National Wildlife Refuge 58 719-589-4021
- Blanca Wetlands 59 719-274-8971
- San Luis Lakes State Wildlife Area 60 719-587-6900
- River State Wildlife Area 61 719-587-6900
- Hot Creek State Wildlife Area 62 719-587-6900
- La Jara Res. State Wildlife Area 63 719-587-6900
- La Jara State Wildlife Area 64 719-587-6900
- Sego Springs State Wildlife Area 65 719-587-6900
- Terrace Reservoir State Wildlife Area 66 719-587-6900
- Mtn. Home Res. State Wildlife Area 67 719-587-6900
- Sanchez Res. State Wildlife Area 68 719-587-6900
- Smith Reservoir State Wildlife Area 69 719-587-6900
- Alberta Park Res. State Wildlife Area 70 719-587-6900
- Big Meadows Res. State Wildlife Area 71 719-587-6900
- Coller State Wildlife Area 72 719-587-6900
- Monte Vista National Wildlife Refuge 73 719-589-4021
- Beaver Creek Res. State Wildlife Area 74 719-587-6900
- Homelake State Wildlife Area 75 719-587-6900
- Rio Grande State Wildlife Area 76 719-587-6900
- Russell Lakes State Wildlife Area 77 719-587-6900
- Baca National Wildlife Refuge 78 719-589-4021
- Cochetopa State Wildlife Area 79 719-587-6900
- Dome Lakes State Wildlife Area 80 719-587-6900
- Conejos River State Wildlife Area 81 719-587-6900
- La Jara Creek Ranch State Wildlife Area 82 719-587-6900
- Trujillo Meadows State Wildlife Area 83 719-587-6900

**INFORMATION**

- Colorado Welcome Center at Alamosa** 601 State Ave, Alamosa 800-BLU-SKYS  
[www.almosa.org](http://www.almosa.org)
- Antonito Visitor Center** 5252 US Hwy 285, Antonito 800-835-1098  
[www.conejosvacation.com](http://www.conejosvacation.com)
- Creede / Mineral County Chamber of Commerce** 1207 N. Main, Creede 719-658-2374  
[www.creede.com](http://www.creede.com)
- Entrada Visitor Center** 319 Miranda Ave, Fort Garland 719-379-3196
- Great Sand Dunes Visitor Center** [www.nps.gov/grsa](http://www.nps.gov/grsa) 719-378-6399
- Monte Vista Visitor Center** Highway 160, Monte Vista [www.monte-vista.org](http://www.monte-vista.org) 719-852-2731
- Rio Grande County Museum & Info. Center** 580 Oak St., Del Norte 800-233-4403  
[www.rgcm.org](http://www.rgcm.org)
- Saguache County Courthouse** 501 4th St., Saguache, CO 81149 719-655-0263  
[www.saguachecounty.net](http://www.saguachecounty.net)
- South Fork Visitor Center** 28 Silverthread Lane, South Fork 800-571-0881  
[www.southfork.org](http://www.southfork.org)

**DRIVING TOURS**

- Bachelor Historic Mines Driving Tour** Creede 719-658-2374  
[www.creede.com/bachelor\\_loop.htm](http://www.creede.com/bachelor_loop.htm)
- Los Caminos Antiguos Scenic & Historic Byway** Fort Garland 719-379-3500  
[www.loscaminos.com](http://www.loscaminos.com)
- Silverthread Scenic Byway** South Fork 800-571-0881  
<http://www.southfork.org/silver/index.html>