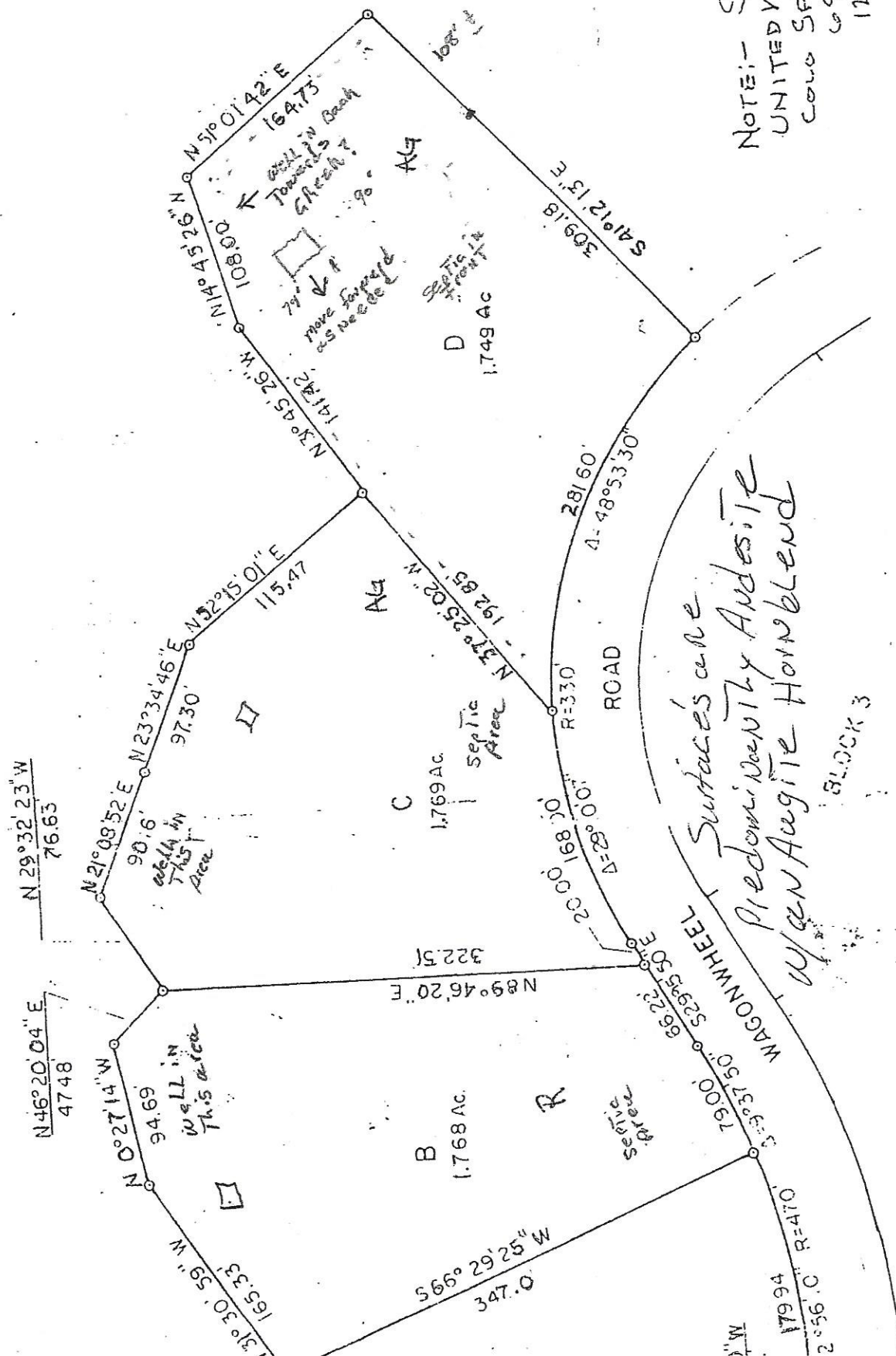


Refiling Of
CASTLE MOUNTAIN RANCH
 Unit No. 1
 Park County, Colorado

Gen -
 This is what the prints
 sent me - apparently
 it's all they have.
 ok Septic, & wells built in the
 30' 50' SET back limits?



*Surfaces are
 Predominantly Andesite
 w/ an Augite Hornblend*

NOTE: - SURVEYED BY -
 UNITED WESEENING'S
 Colo SFGS, Colo.
 09-11-53
 12-4-69

Block 3