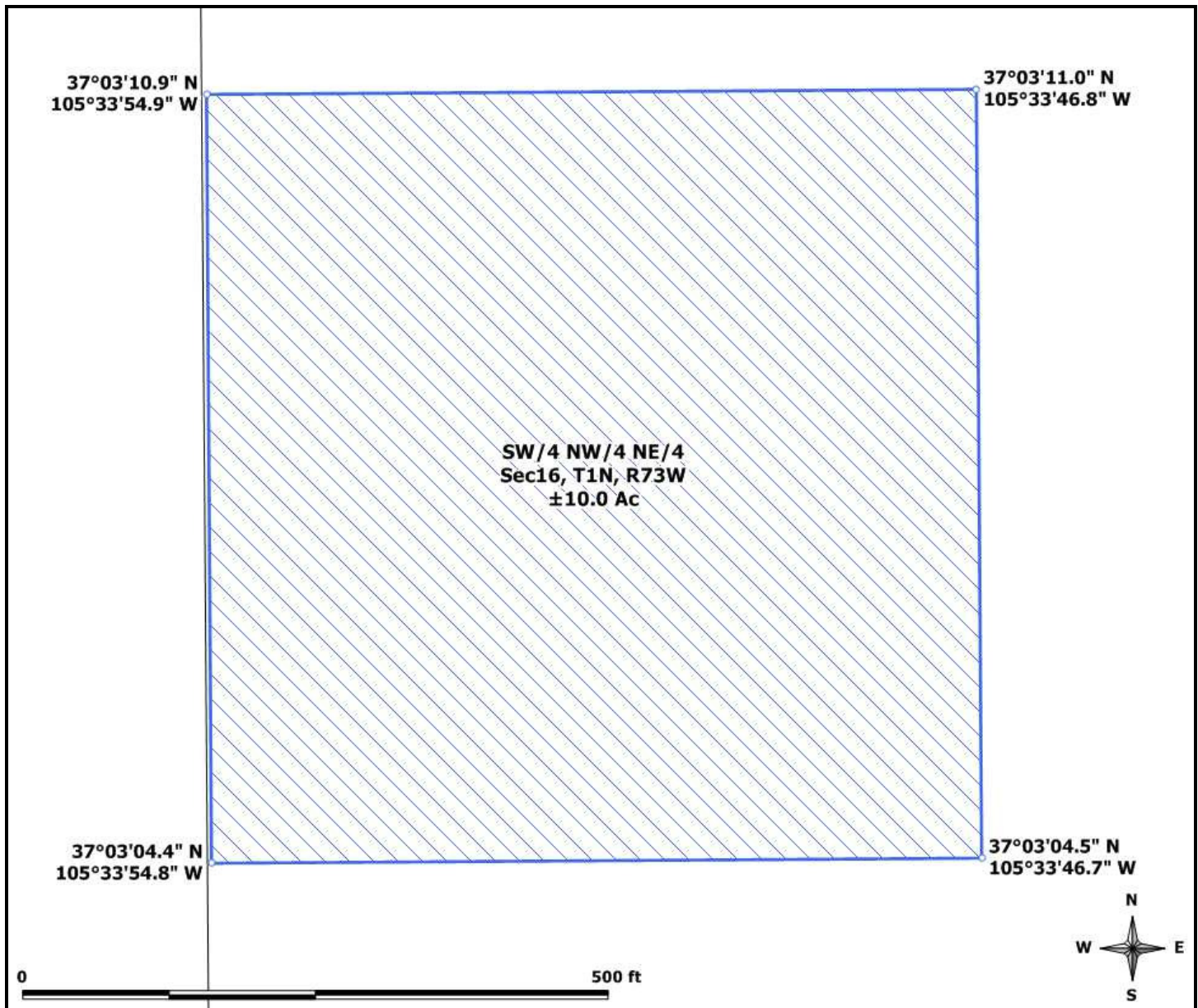


Southwest Quarter of the Northwest Quarter of the Northeast Quarter (SW/4 NW/4 NE/4)
Section 16, T1N, R73W
Costilla County, Colorado
GPS Corners



GPS Coordinates presented here are in the Universal Transverse Mercator (UTM) Zone 13 N coordinate system using the North America Datum for 1983 (NAD83).

Note that these coordinates are based upon the best data we have accumulated, **but are not exact**. This information is for the purpose of locating your property only. Prior to building a fence or any structures on your land, you should contact a State licensed surveyor to mark the exact corners of your property.