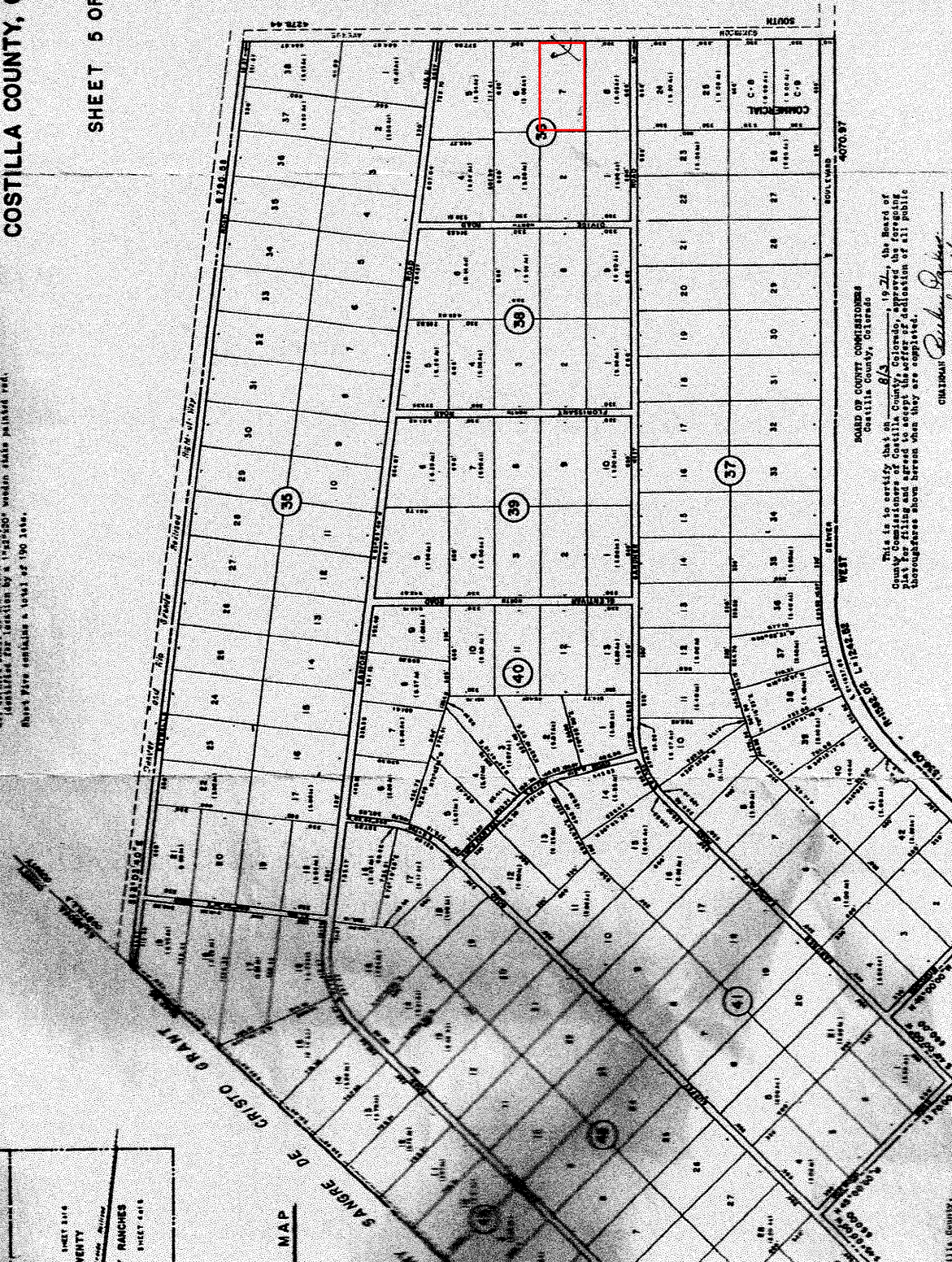


**BLOCKS 35 thru 43
UNIT TWENTY
SAN LUIS VALLEY RANCHES
SANGRE DE CRISTO GRANT
COSTILLA COUNTY, COLORADO**

SHEET 5 OF 6

NOTE: THESE RANGES CONTAIN:
All public thoroughfares, city streets, highways,
and lines or easements of public utility or other character.
There is a four-foot utility easement along all sides of each lot.
All water rights, ditches, canals, and other water rights are shown as they exist on the date of this map.
Distances along curved lines are per tape.
All bearings shall be 2 1/2" from the north meridian, and
distances shall be from a 1/2" x 1/2" wooden stake painted red.
Sheet five contains a total of 190 lots.



BOARD OF COUNTY COMMISSIONERS
Costilla County, Colorado

This is to certify that on 8/3, 1921, the Board of County Commissioners of Costilla County, Colorado, approved the foregoing plat for filing and agreed to accept its offer of dedication of all public thoroughfares shown hereon when they are completed.

CHAIRMAN *Robert E. Welch*
MEMBER *James L. ...*
MEMBER *...*

I, Robert E. Welch, Colorado Registered Land Surveyor No. 4735, do hereby certify that the plat shown herein was prepared under my supervision and that it is true and correct to the best of my knowledge and belief.



ROBERT E. WELCH, CHECK NO. 2793